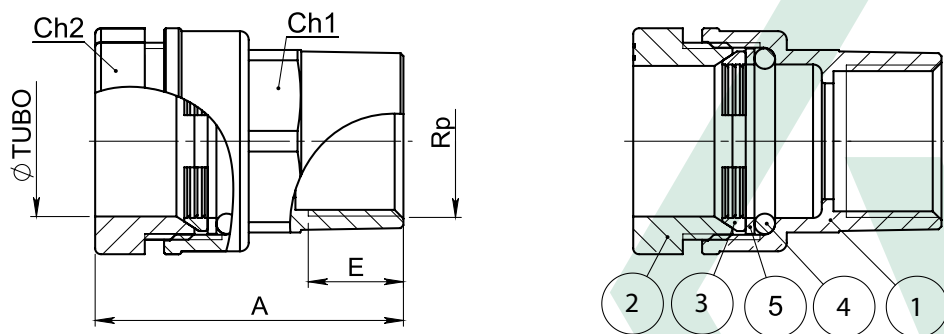


Scheda Tecnica *Technical sheet*

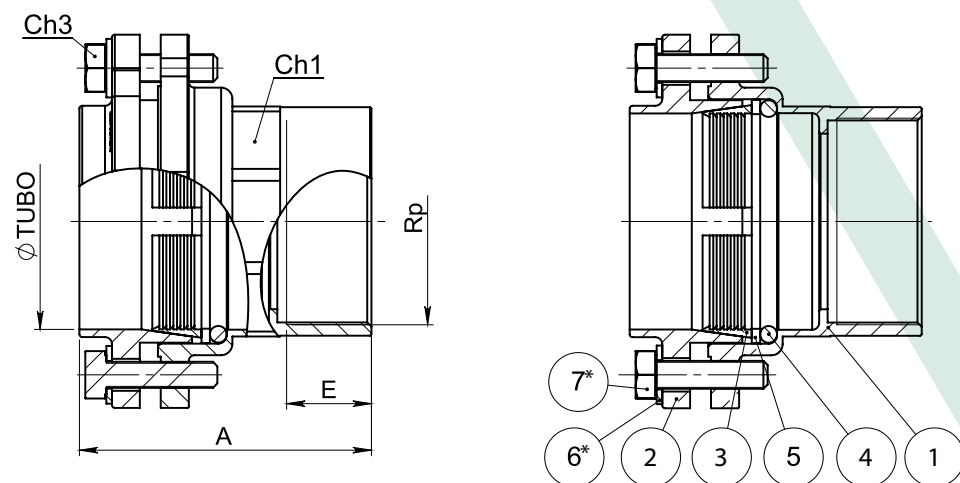
ART.3005	SPECIFICATION		APPLICATION	TECHNICAL NOTES
	Straight female coupler. Size. from $\varnothing 20 \times 1/2''$ to $\varnothing 110 \times 4''$.	Series	3005	Assembly in rigid pipe system
Thread ends		Pipe-Female UNI EN 10226 (ISO 7/1)	Nominal pressure (PN) in bar: 30	Conformity with DIN 8076 - EN 1254/3 - DVGW GW 335 UBA BWGL - UNI EN 681-1 and EN 682
Orifice		from $\varnothing 20$ to $\varnothing 110$ mm	KV: Flowrate coefficient m^3/h	
Technical additions Flanged version: from $\varnothing 75$ to $\varnothing 110$ (*) For $\varnothing 20$ nut material is: CW617N		Direction of flow: as desired	2 YEARS warranty	
		Temperature range: $-20^\circ C / +80^\circ C$	Manufactured in brass alloy compliant with EN 12165-CW617N-DW	
		Use: Water		

Standard version




N°	Descrizione	Description	Materials	Q.ty
1	Corpo	Body	CW617N	1
2	Dado	Nut	CW602N (*)	1
3	Ghiera	Compression ring	CW614N	1
4	O-ring	O-ring	01/B70 NBR	1
5	Rondella	Brass ring	CW614N	1
6*	Rondella	Brass ring	AISI 304	4
7*	Vite	Screw	AISI 304	4

Flanged version: from $\varnothing 75$ to $\varnothing 110$



Rp	Ø PIPE	A	E	Ch1	Ch2	Ch3	PN
1/2"	20	49	15	26	34		30
1/2"	25	52	15	30	39		30
3/4"	25	53	16,5	31	39		30
3/4"	32	59	16,5	37	48		30
1"	25	56,5	19,1	37	39		30
1"	32	62,5	19,1	38	48		30
1"1/4	32	65	21,5	47	48		30
1"1/4	40	78	21,5	47	58		30
1"1/2	50	80	21,5	56	69		30
2"	63	89	26	69	82		30
2"1/2	75	100	30,5	82		17	30
3"	90	111,5	33,5	98		17	30
4"	110	147	39,5	120		17	30

N° Disegno / Drawing Nr	Misure / Size		UFFICIO TECNICO
3005	$\varnothing 20 \times 1/2'' - \varnothing 110 \times 4''$		